



Oras Nova

Installation and maintenance guide





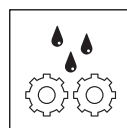
4-16



17-19



20



21-24



25



Accepterad
monteringsanvisning
2021-1



1598 KIWA Sverige 1913

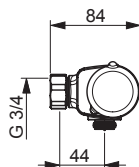
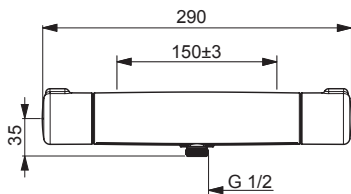


SV: Om blandaren är monterad så att handduschen når vattenspegeln på WC/
bidé ska utloppet på blandaren kompletteras med en extra backventil Oras
105311. Detta för att uppfylla kraven gällande återströmning enligt SäVa § 5:3



7460, 7460-33

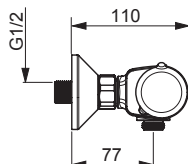
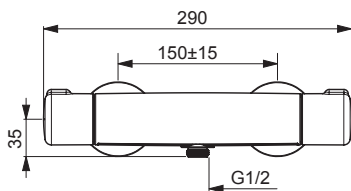
I (ISO 3822) Oras lab.
EN 1111
100 - 1000 kPa
0.19 l/s (Eco)
0.27 l/s (300 kPa)
165 kPa (0.2 l/s)
max. +80°C



mpi.oras.com/7460

7460U, 7460U-33

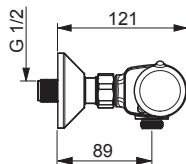
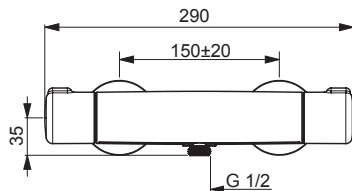
I (ISO 3822) Oras lab.
EN 1111
100 - 1000 kPa
0.19 l/s (Eco)
0.27 l/s (300 kPa)
165 kPa (0.2 l/s)
max. +80°C



mpi.oras.com/7460U

7460X

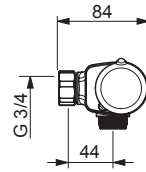
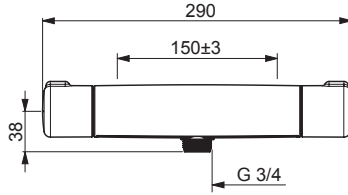
I (ISO 3822) Oras lab.
EN 1111
100 - 1000 kPa
0.19 l/s (Eco)
165 kPa (0.2 l/s)
max. +80°C



mpi.oras.com/7460X

7461

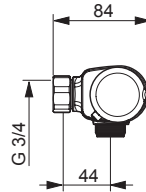
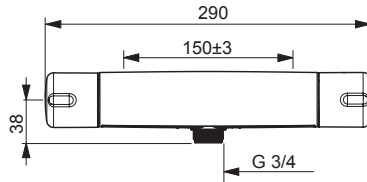
I (ISO 3822) Oras lab.
EN 1111
100 - 1000 kPa
0.19 l/s (Eco)
0.28 l/s (300 kPa)
165 kPa (0.2 l/s)
max. +80°C



mpi.oras.com/7461

7471

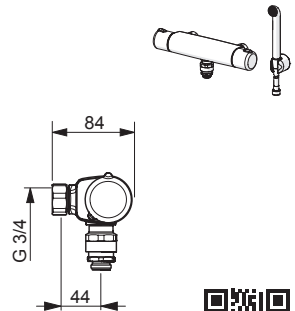
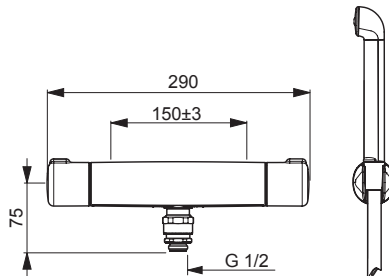
I (ISO 3822) Oras lab.
EN 1111
100 - 1000 kPa
0.19 l/s (Eco)
0.27 l/s (300 kPa)
165 kPa (0.2 l/s)
max. +80°C



mpi.oras.com/7471

7484

I (ISO 3822) Oras lab.
EN 1111
100 - 1000 kPa
0.18 l/s (Eco)
0.26 l/s (300 kPa)
180 kPa (0.2 l/s)
max. +80°C

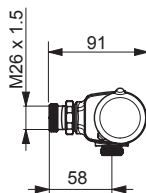
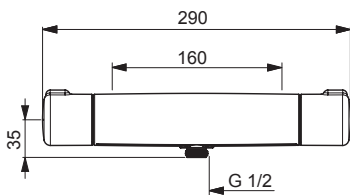


mpi.oras.com/7484



7464

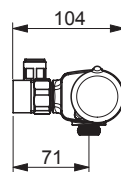
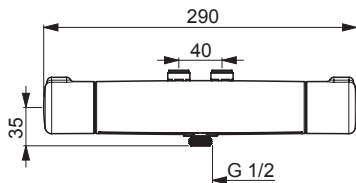
I (ISO 3822) Oras lab.
EN 1111
100 - 1000 kPa
0.19 l/s (Eco)
0.27 l/s (300 kPa)
165 kPa (0.2 l/s)
max. +80°C



mpi.oras.com/7464

7466

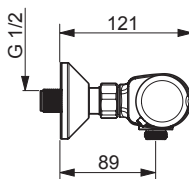
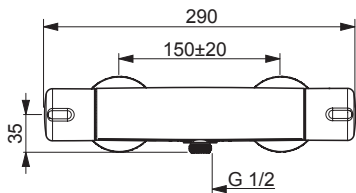
I (ISO 3822) Oras lab.
EN 1111
100 - 1000 kPa
0.18 l/s (Eco)
0.26 l/s (300 kPa)
180 kPa (0.2 l/s)
max. +80°C



mpi.oras.com/7466

7470X

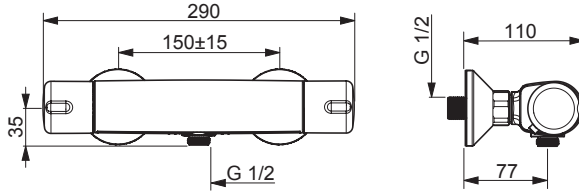
I (ISO 3822) Oras lab.
EN 1111
100 - 1000 kPa
0.19 l/s (Eco)
0.27 l/s (300 kPa)
165 kPa (0.2 l/s)
max. +80°C



mpi.oras.com/7470X

7470U

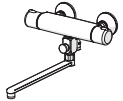
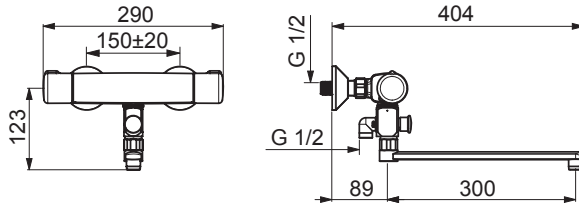
I (ISO 3822) Oras lab.
EN 1111
100 - 1000 kPa
0.19 l/s (Eco)
0.27 l/s (300 kPa)
165 kPa (0.2 l/s)
max. +80°C



mpi.oras.com/7470U

7446X

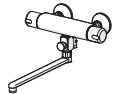
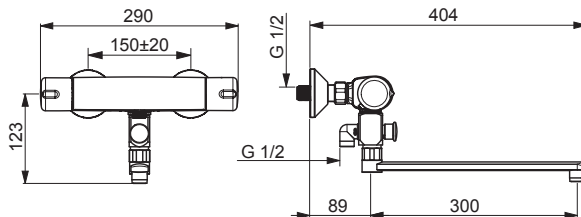
I (ISO 3822) Oras lab.
EN 1111
100 - 1000 kPa
0.16 l/s (Eco)
0.23 l/s (300 kPa)
230 kPa (0.2 l/s)
max. +80°C



mpi.oras.com/7446X

7447X

I (ISO 3822) Oras lab.
EN 1111
100 - 1000 kPa
0.16 l/s (Eco)
0.23 l/s (300 kPa)
230 kPa (0.2 l/s)
max. +80°C

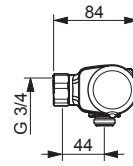
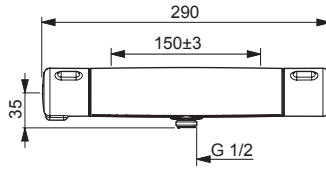


mpi.oras.com/7447X



7469

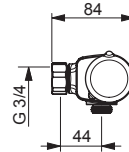
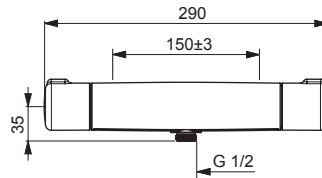
EN 1111
100 - 1000 kPa
0.27 l/s (300 kPa)
165 kPa (0.2 l/s)
max. +80°C



mpi.oras.com/7469

7420

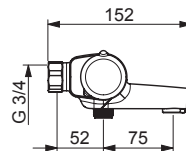
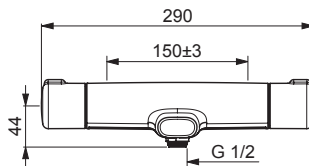
I (ISO 3822) Oras lab.
EN 1111
100 - 1000 kPa
0.15 l/s (300 kPa w/Controller)
150 kPa (0.2 l/s)
max. +80°C



mpi.oras.com/7420

7462

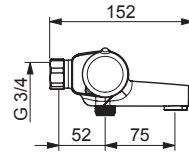
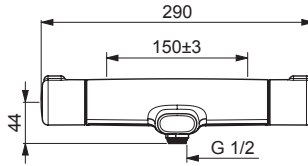
II (ISO 3822) Oras lab.
EN 1111
100 - 1000 kPa
0.16 l/s (Eco)
0.33 l/s (300 kPa)
230 kPa (0.2 l/s)
300 kPa (0.3 l/s)
max. +80°C



mpi.oras.com/7462

7462G, 7462G-33

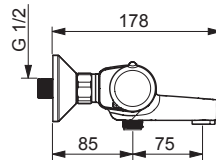
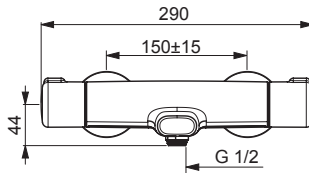
I (ISO 3822)
 EN 1111
 100 - 1000 kPa
 0.16 l/s (Eco)
 0.23 l/s (300 kPa)
 230 kPa (0.2 l/s)
 max. +80°C



mpi.oras.com/7462G

7462U, 7462U-33

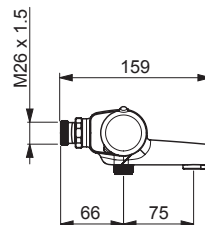
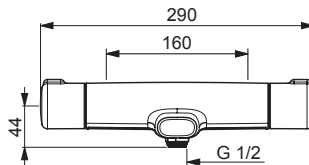
I (ISO 3822) Oras lab.
 EN 1111
 100 - 1000 kPa
 0.16 l/s (Eco)
 0.33 l/s (300 kPa)
 230 kPa (0.2 l/s)
 300 kPa (0.3 l/s)
 max. +80°C



mpi.oras.com/7462U

7443

II (ISO 3822) Oras lab.
 EN 1111
 100 - 1000 kPa
 0.16 l/s (Eco)
 0.33 l/s (300 kPa)
 230 kPa (0.2 l/s)
 300 kPa (0.3 l/s)
 max. +80°C

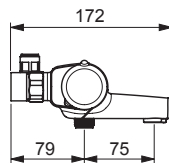
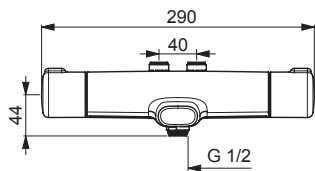


mpi.oras.com/7443



7445

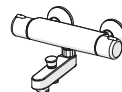
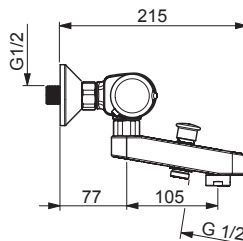
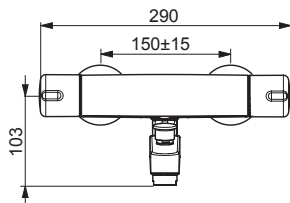
II (ISO 3822) Oras lab.
 EN 1111
 100 - 1000 kPa
 0.15 l/s (Eco)
 0.3 l/s (300 kPa)
 250 kPa (0.2 l/s)
 300 kPa (0.3 l/s)
 max. +80°C



mpi.oras.com/7445

7442U

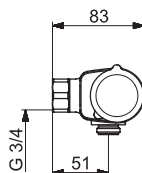
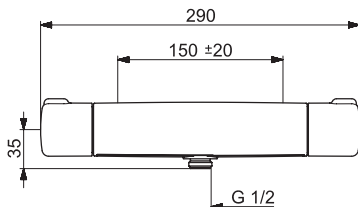
I (ISO 3822) Oras lab.
 EN 1111
 100 - 1000 kPa
 0.18 l/s (Eco)
 0.3 l/s (300 kPa)
 180 kPa (0.2 l/s)
 300 kPa (0.3 l/s)
 max. +80°C



mpi.oras.com/7442U

7460L

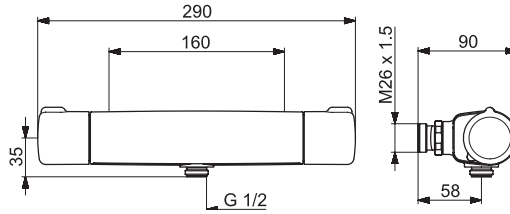
I (ISO 3822) Oras lab.
 EN 1111
 100 - 1000 kPa
 0.19 l/s (Eco)
 0.27 l/s (300 kPa)
 165 kPa (0.2 l/s)
 max. +80°C



mpi.oras.com/7460L

7464L

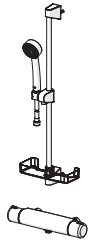
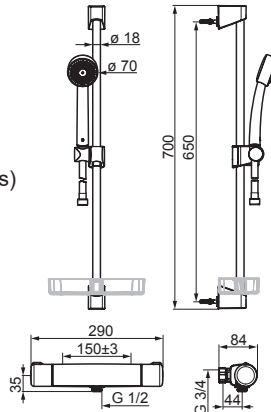
I (ISO 3822) Oras lab.
 EN 1111
 100 - 1000 kPa
 0.19 l/s (Eco)
 0.27 l/s (300 kPa)
 165 kPa (0.2 l/s)
 max. +80°C



mpi.oras.com/7464L

7412, (7460+530), 7412L

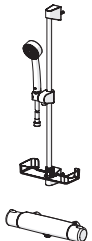
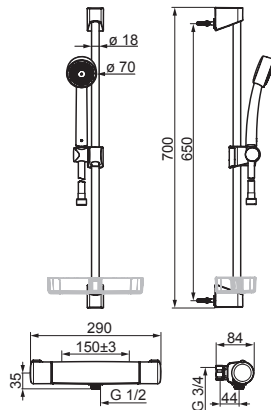
I (ISO 3822) Oras lab.
 EN 1111
 100 - 1000 kPa
 0.12 l/s (300 kPa w/Controller)
 200 kPa (0.2 l/s) / 7412L: 165 kPa (0.2 l/s)
 max. +80°C



mpi.oras.com/7412

7425, (7460+520)

I (ISO 3822) Oras lab.
 EN 1111
 100 - 1000 kPa
 0.2 l/s (Eco)
 0.28 l/s (300 kPa)
 155 kPa (0.2 l/s)
 max. +80°C

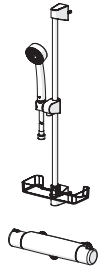
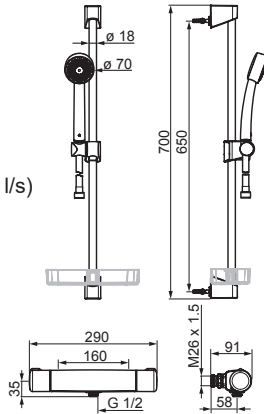


mpi.oras.com/7425



7422, (7464+530), 7422L

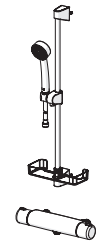
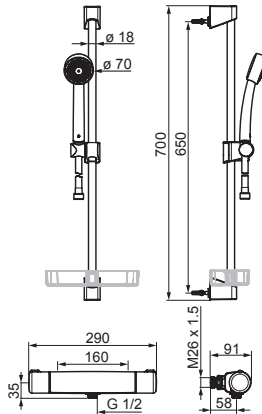
I (ISO 3822) Oras lab.
 EN 1111
 100 - 1000 kPa
 0.12 l/s (300 kPa w/Controller)
 200 kPa (0.2 l/s) / 7422L: 165 kPa (0.2 l/s)
 max. +80°C



mpi.oras.com/7422

7427, (7464+520)

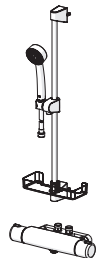
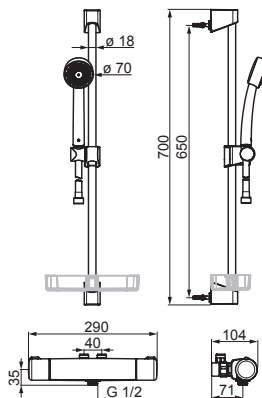
I (ISO 3822) Oras lab.
 EN 1111
 100 - 1000 kPa
 0.2 l/s (Eco)
 0.28 l/s (300 kPa)
 155 kPa (0.2 l/s)
 max. +80°C



mpi.oras.com/7427

7432, (7466+530)

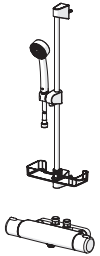
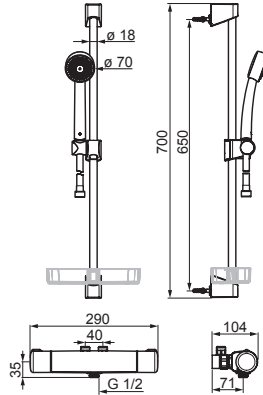
I (ISO 3822) Oras lab.
 EN 1111
 100 - 1000 kPa
 0.12 l/s (300 kPa w/Controller)
 200 kPa (0.2 l/s)
 max. +80°C



mpi.oras.com/7432

7424, (7466+520)

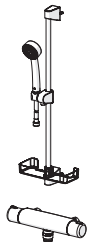
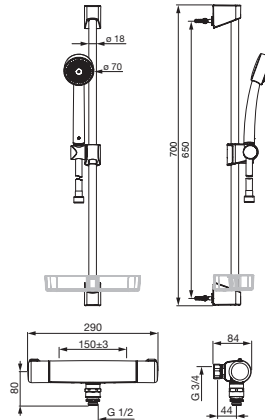
I (ISO 3822) Oras lab.
 EN 1111
 100 - 1000 kPa
 0.19 l/s (Eco)
 0.27 l/s (300 kPa)
 160 kPa (0.2 l/s)
 max. +80°C



mpi.oras.com/7424

7495, (7461+261033+520)

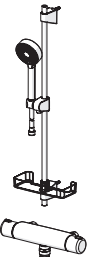
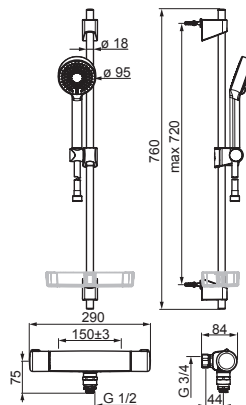
I (ISO 3822) Oras lab.
 EN 1111
 100 - 1000 kPa
 0.2 l/s (Eco)
 0.28 l/s (300 kPa)
 155 kPa (0.2 l/s)
 max. +80°C



mpi.oras.com/7495

7455, (7461+261033+544)

I (ISO 3822) Oras lab.
 EN 1111
 100 - 1000 kPa
 0.2 l/s (Eco)
 0.28 l/s (300 kPa)
 160 kPa (0.2 l/s)
 max. +80°C

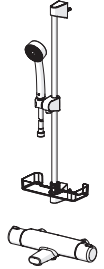
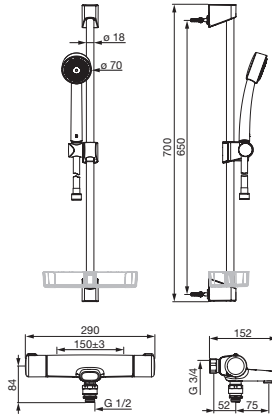


mpi.oras.com/7455



7448, (7462G+261031+520)

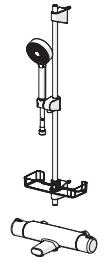
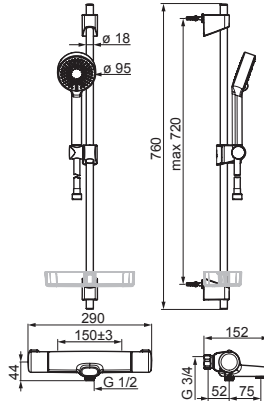
I (ISO 3822) Oras lab.
 EN 1111
 100 - 1000 kPa
 0.17 l/s (Eco)
 0.24 l/s (300 kPa)
 220 kPa (0.2 l/s)
 max. +80°C



mpi.oras.com/7448

7453, (7462G+544)

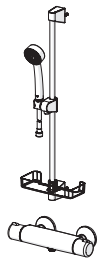
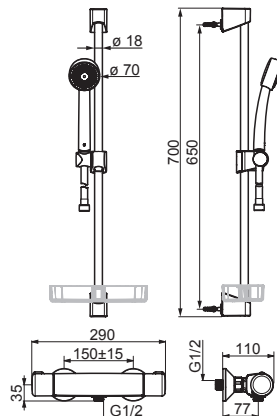
I (ISO 3822) Oras lab.
 EN 1111
 100 - 1000 kPa
 0.17 l/s (Eco)
 0.26 l/s (300 kPa)
 200 kPa (0.2 l/s)
 max. +80°C



mpi.oras.com/7453

7452U, (7460U+530)

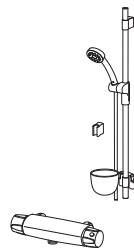
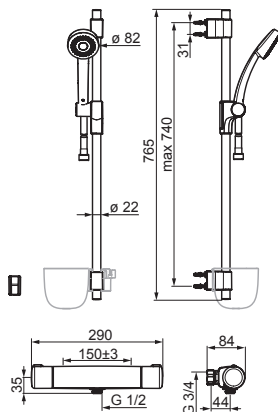
I (ISO 3822) Oras lab.
 EN 1111
 100 - 1000 kPa
 0.12 l/s (300 kPa w/Controller)
 max. +80°C



mpi.oras.com/7452U

7429, (7460+500)

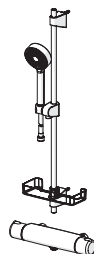
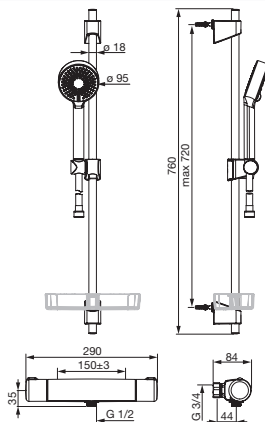
I (ISO 3822)
 EN 1111
 100 - 1000 kPa
 0.12 l/s (300 kPa w/Controller)
 max. +80°C



mpi.oras.com/7429

7413, (7460+544)

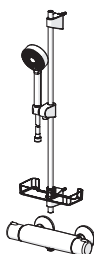
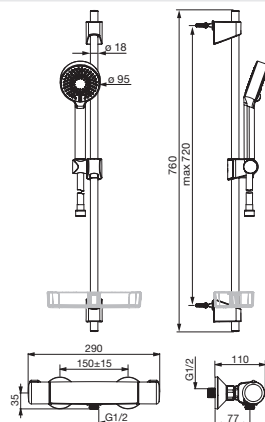
I (ISO 3822) Oras lab.
 EN 1111
 100 - 1000 kPa
 0.16 l/s (Eco)
 0.24 l/s (300 kPa)
 210 kPa (0.2 l/s)
 max. +80°C



mpi.oras.com/7413

7413U, (7460U+544)

I (ISO 3822) Oras lab.
 EN 1111
 100 - 1000 kPa
 0.16 l/s (Eco)
 0.24 l/s (300 kPa)
 210 kPa (0.2 l/s)
 max. +80°C

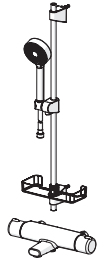
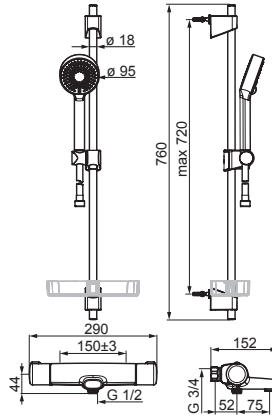


mpi.oras.com/7413U



7414, (7462+544)

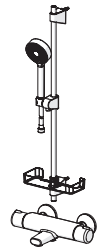
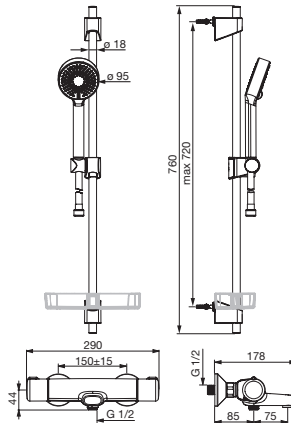
II (ISO 3822) Oras lab.
 EN 1111
 100 - 1000 kPa
 0.14 l/s (Eco)
 0.33 l/s (300 kPa)
 300 kPa (0.3 l/s)
 max. +80°C



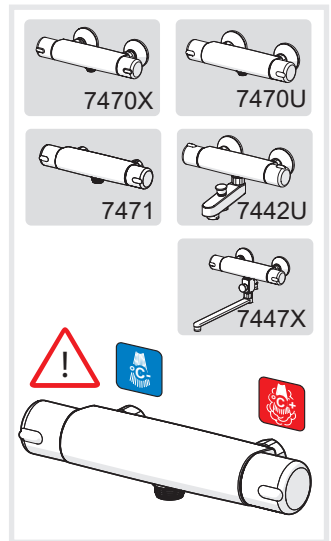
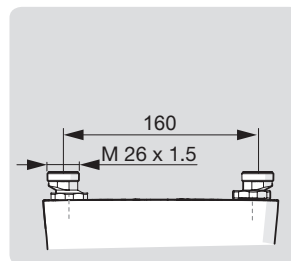
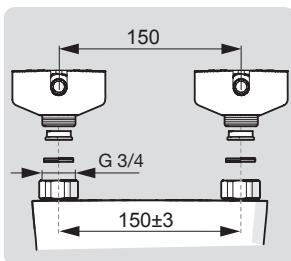
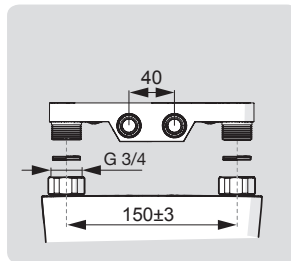
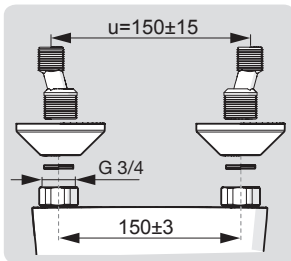
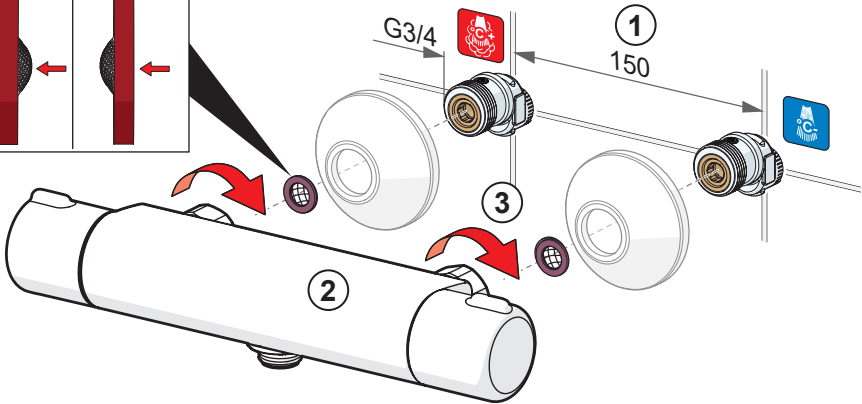
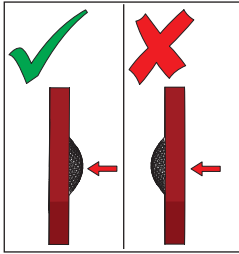
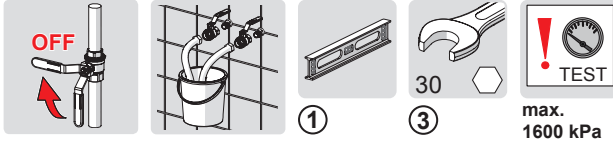
mpi.oras.com/7414

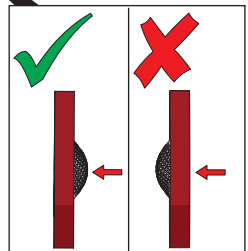
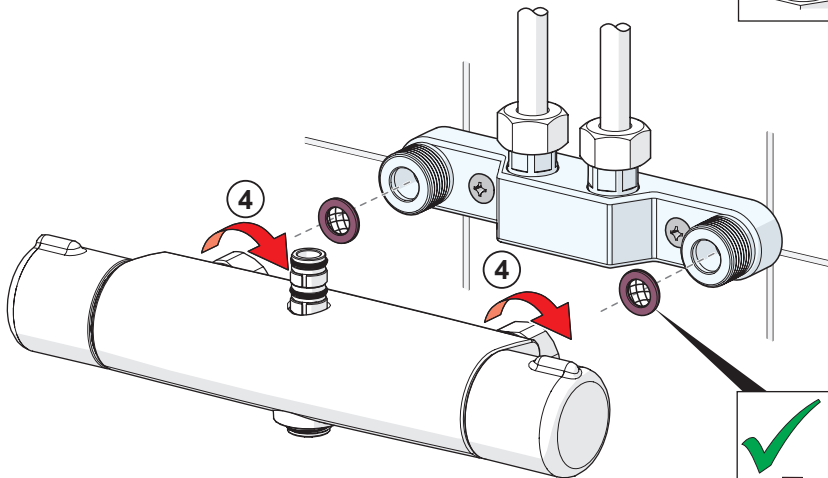
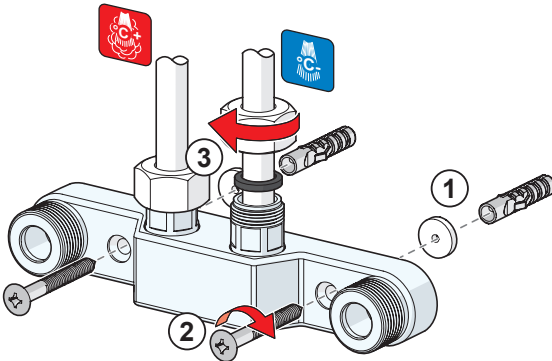
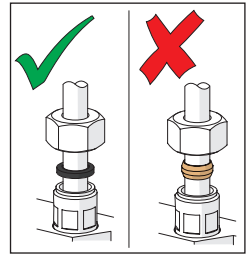
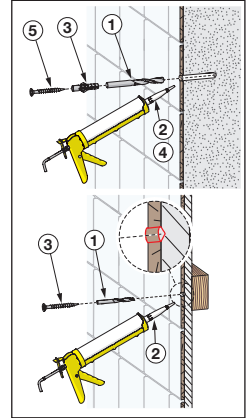
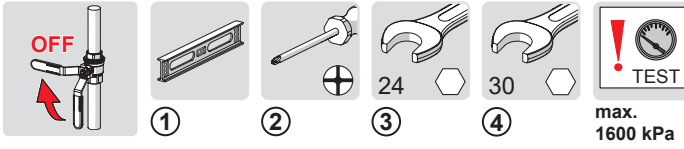
7414U, (7462U+544)

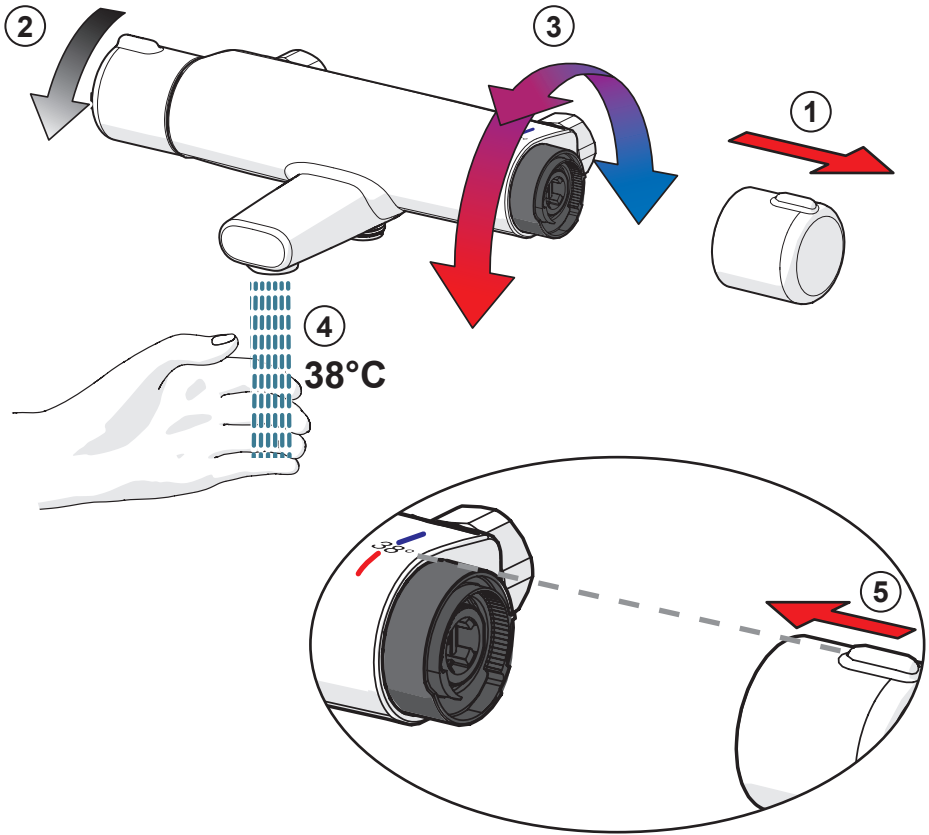
I (ISO 3822) Oras lab.
 EN 1111
 100 - 1000 kPa
 0.14 l/s (Eco)
 0.33 l/s (300 kPa)
 300 kPa (0.3 l/s)
 max. +80°C

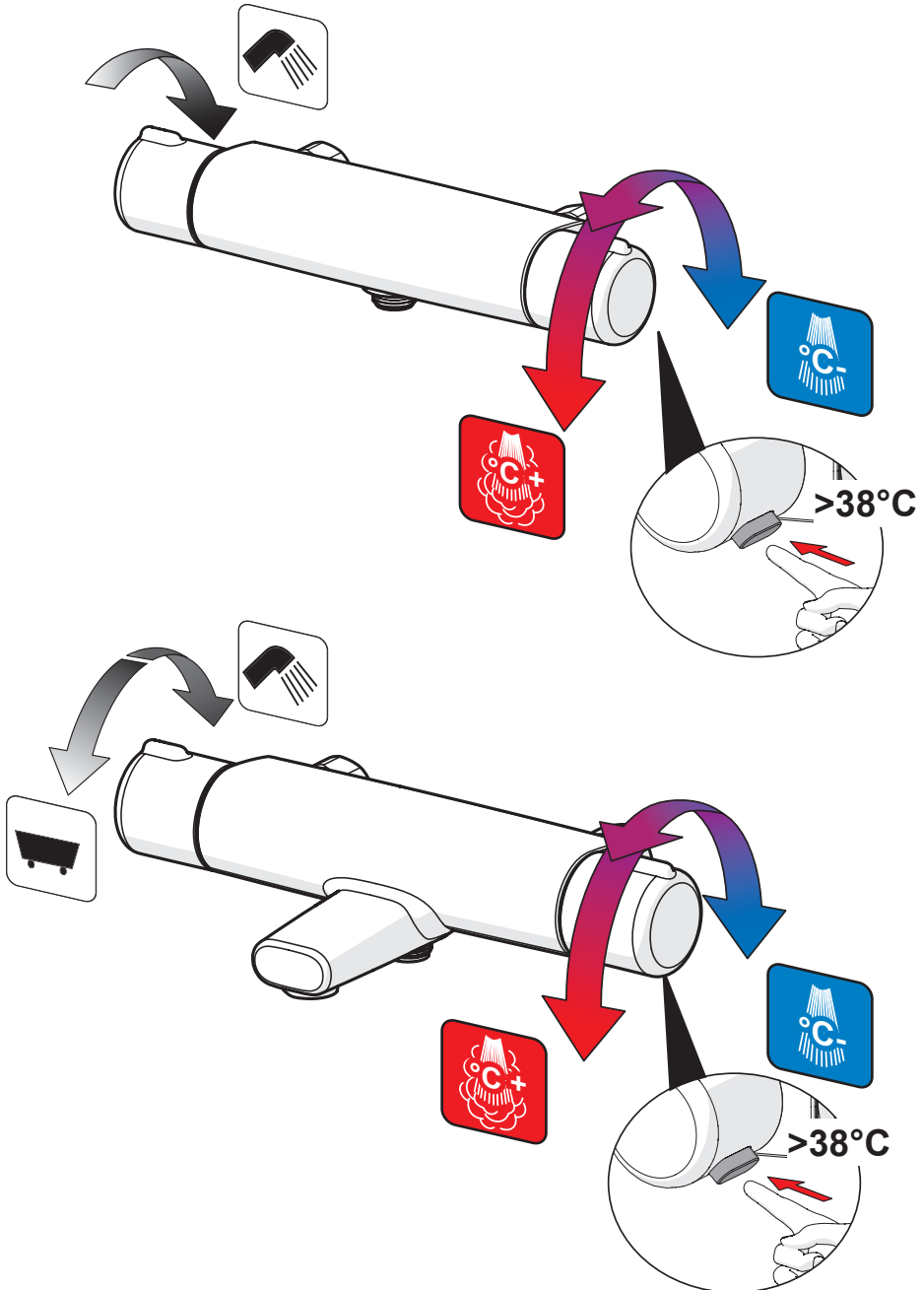


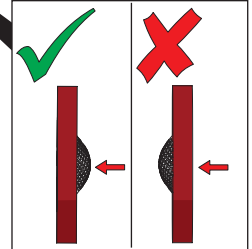
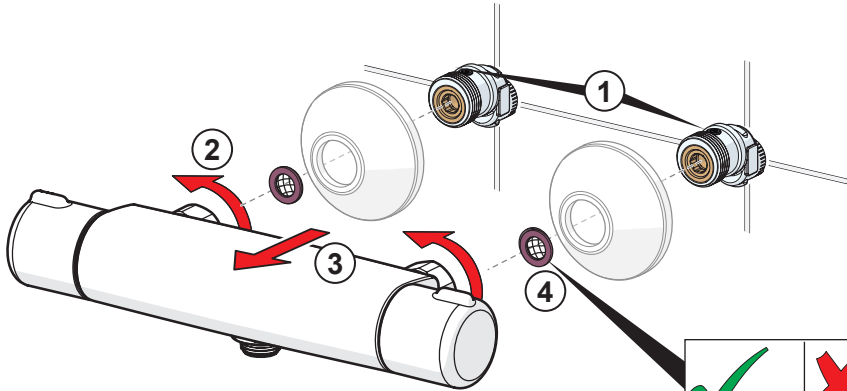
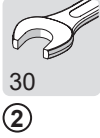
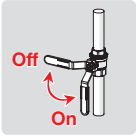
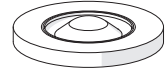
mpi.oras.com/7414U

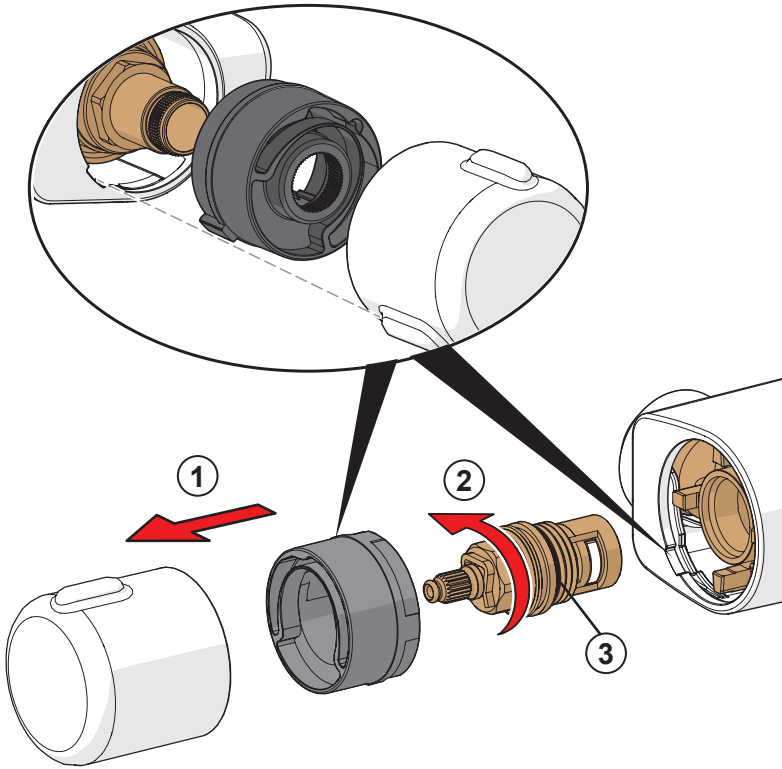
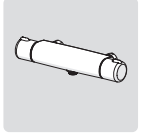
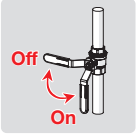


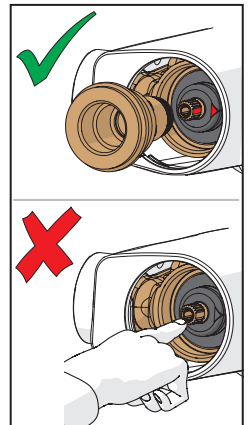
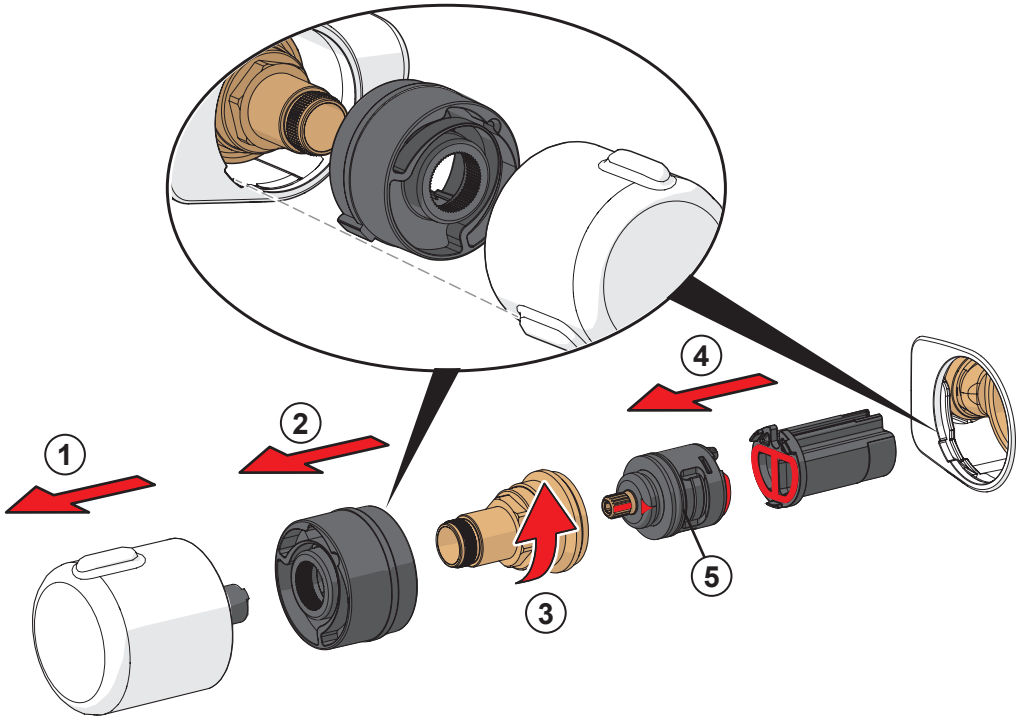
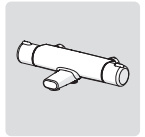
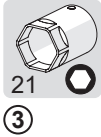
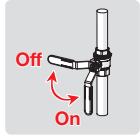
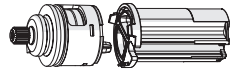


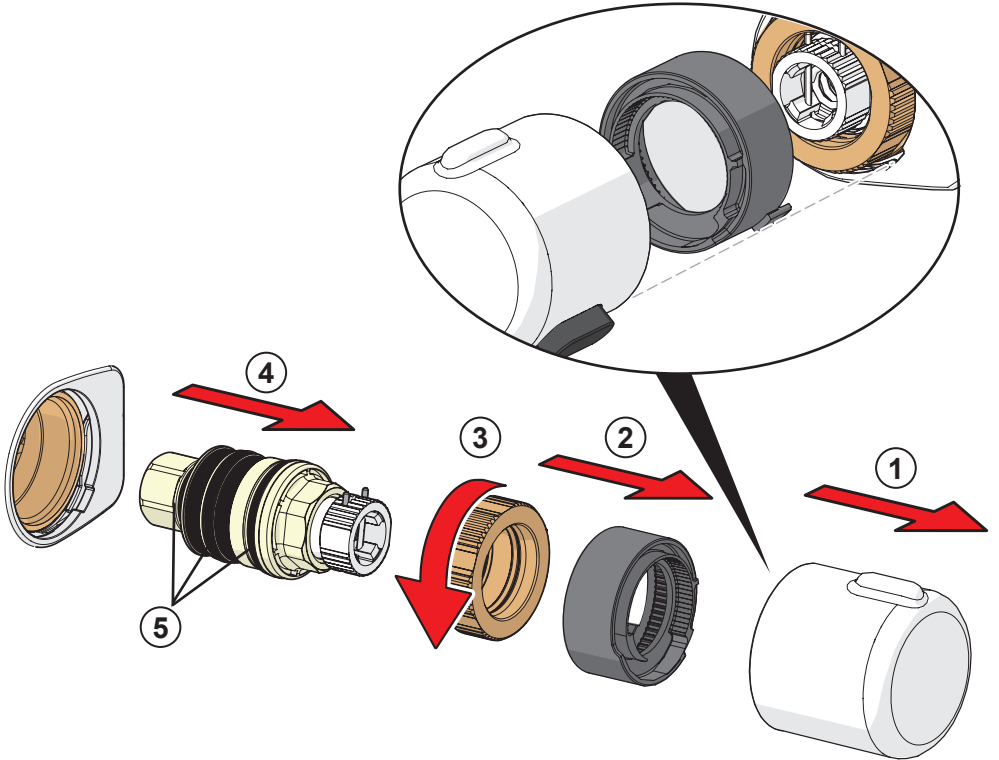
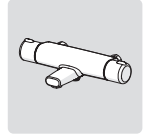
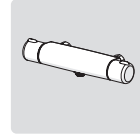
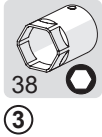
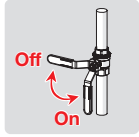


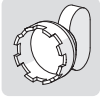








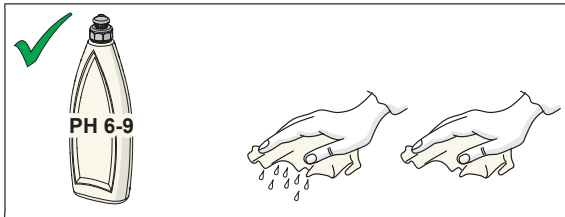
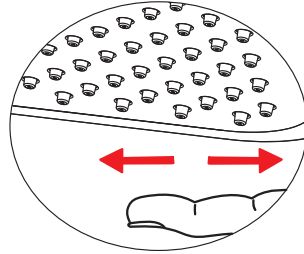
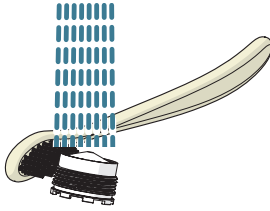




①



②



cleaning.oras.com

Oras Group is a powerful European provider of sanitary fittings: the market leader in the Nordics and a leading company in Continental Europe. The company's mission is to make the use of water easy and sustainable and its vision is to become the European leader of advanced sanitary fittings. Oras Group has two strong brands: Oras and Hansa.

The Group's head office is located in Rauma, Finland, and the Group has three manufacturing sites: Kralovice (Czech Republic), Olesno (Poland) and Rauma (Finland). Oras Group employs approximately 1,200 people in twenty countries. Oras Group is owned by Oras Invest, a family company and an industrial owner.

ORAS Ltd
Isometsäntie 2, P.O. Box 40
FI-26101 Rauma
Tel. +358 2 83 161
Fax +358 2 831 6300
info.finland@oras.com
www.oras.com



943213-09-21